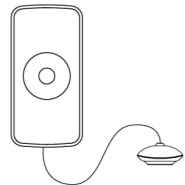


Smart Water Leakage Sensor

USER MANUAL

M414-14Ever1.0



*Please read the user manual carefully before operation.
The guide pictures are for reference only.

PRODUCT INTRODUCTION

Smart water leakage sensor. Separate design of body and sensor, efficiently let you place the sensor in critical spots. High precision and sensitivity. May be used for basement, bathroom, kitchen, laundry room and other places that may have water leakage or water overflow.

TECHNICAL PARAMETERS

Operating Voltage: DC3V (2x AAA battery)

Static current: $\leq 5\mu\text{A}$

Alarm current: $\leq 30\text{mA}$

Networking: ZigBee 1.2 Home Automation

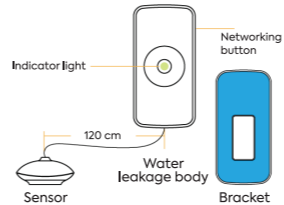
Operating temperature: $-10^{\circ}\text{C}\sim+50^{\circ}\text{C}$

Relative humidity: Maximum 95%RH

Body dimensions: 76x36.6x16.5mm

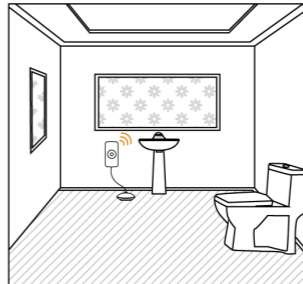
Sensor dimensions: 28.3x26.5x12.2mm

SENSOR PLACEMENT

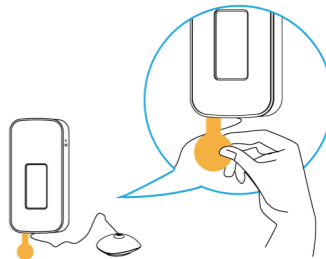


1. Install water leakage sensor at easy leakage area.
2. Don't install water leakage sensor at position of rainwater, lampblack, water vapor etc.
3. Don't install water leakage sensor at water immersed position.

ILLUSTRATION



STEP 1

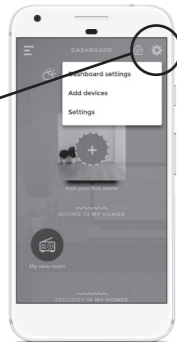


Remove the battery insulator from product to activate.

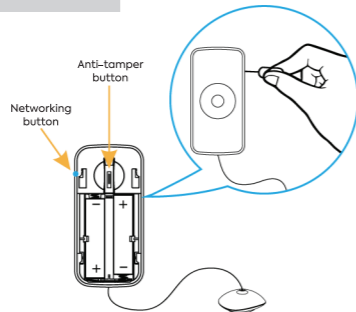
STEP 2



Click on the gear-symbol on your dashboard to add new device. Start device scan to search for new device.



STEP 3



Add to gateway:

After starting the search in the APP, press network button (pin hole) for 3 seconds to enter inclusion mode. LED will flash rapidly until device are detected by your gateway, you will see the new device appear in the search results on your app.

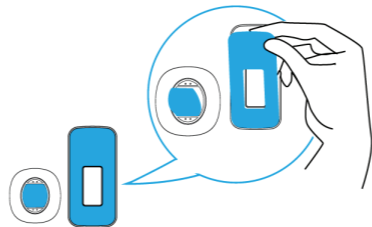
Disconnect:

Press and hold the network button (pin hole) for 5 seconds to disconnect / reset the device. The LED will flash six times to indicate successfully disconnected / reset.

LED Indicator instruction of devices

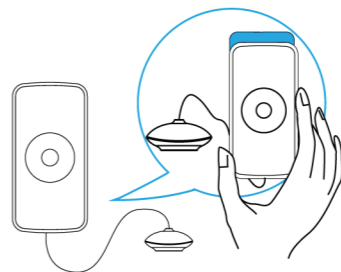
Add network	Pressing network button for 2 seconds, green LED flash (twice per second)
Quit network	Green LED flash six times (once per second)
Alarm	Red LED flash one time

STEP 4



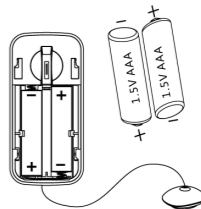
Remove the protecting film of the adhesive tape and mount the sensor to the required area.

STEP 5



Insert water leakage body to bracket.

CHANGING BATTERY



Please replace battery correctly, following the battery positive and negative electrode. Attention to environmental protection and dispose used battery properly.