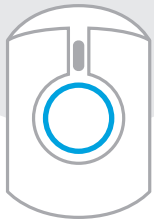


INSTALLATION MANUAL

v.1.0



SIREN

eng

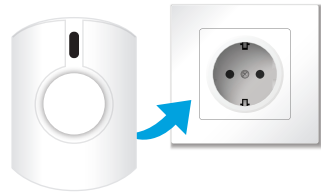
*Powerful siren
for your home
security system*

PRODUCT DESCRIPTION

This AC-powered siren will give a loud 95dB alarm sound if an alarm is triggered in your connected home. It is supplied with a backup battery which comes in handy if there is a power outage or the device is removed from the socket. You can have multiple sirens in your connected home. All devices with sirens are connected - if one is triggered, all will be triggered.

GETTING STARTED

1. Place the siren in a wall socket



2. Press and hold the button, release when it flashes once.
3. Open the app and search for a new device.

RESETTING

1. Press and hold the reset button. Press and hold the button for approximately 10 seconds.
2. Release the button when the LED flashes red once.



BATTERY BACKUP

- The indoor siren is equipped with a backup battery
- Battery backup time*: 17 hours
- Ni-MH AAA battery x 4

***Note:** Actual battery life may vary with product settings, operating environment, and usage.

PLACEMENT

- Place the siren indoors
- Operating temperature -10°C to 45°C
- Up to 85% humidity, non-condensing
- In case of bad signal, place a smart plug or other ZigBee repeater device in between the Siren and gateway to strengthen the ZigBee network

FAULT FINDING

- The siren is not found during scan - follow the reset routine and try to scan for the device again
- In case of weak or bad signal, change the location of the Siren or gateway
- In case of power failure the device will restart itself to on status

PRECAUTIONS

- Do not remove product label as it contains important information
- Do not paint the siren
- Keep away from ears when siren is triggered
- Do not open the siren

DISPOSAL

Dispose the product and battery properly at the end of life. This is electronic waste which should be recycled.

CERTIFICATION

ZigBee Home Automation 1.2 certified.



All rights reserved.

Wattle assumes no responsibility for any errors, which may appear in this manual. Furthermore, Wattle reserves the right to alter the hardware, software, and/or specifications detailed herein at any time without notice, and Wattle does not make any commitment to update the information contained herein. All the trademarks listed herein are owned by their respective owners.

Copyright © Wattle

wattle